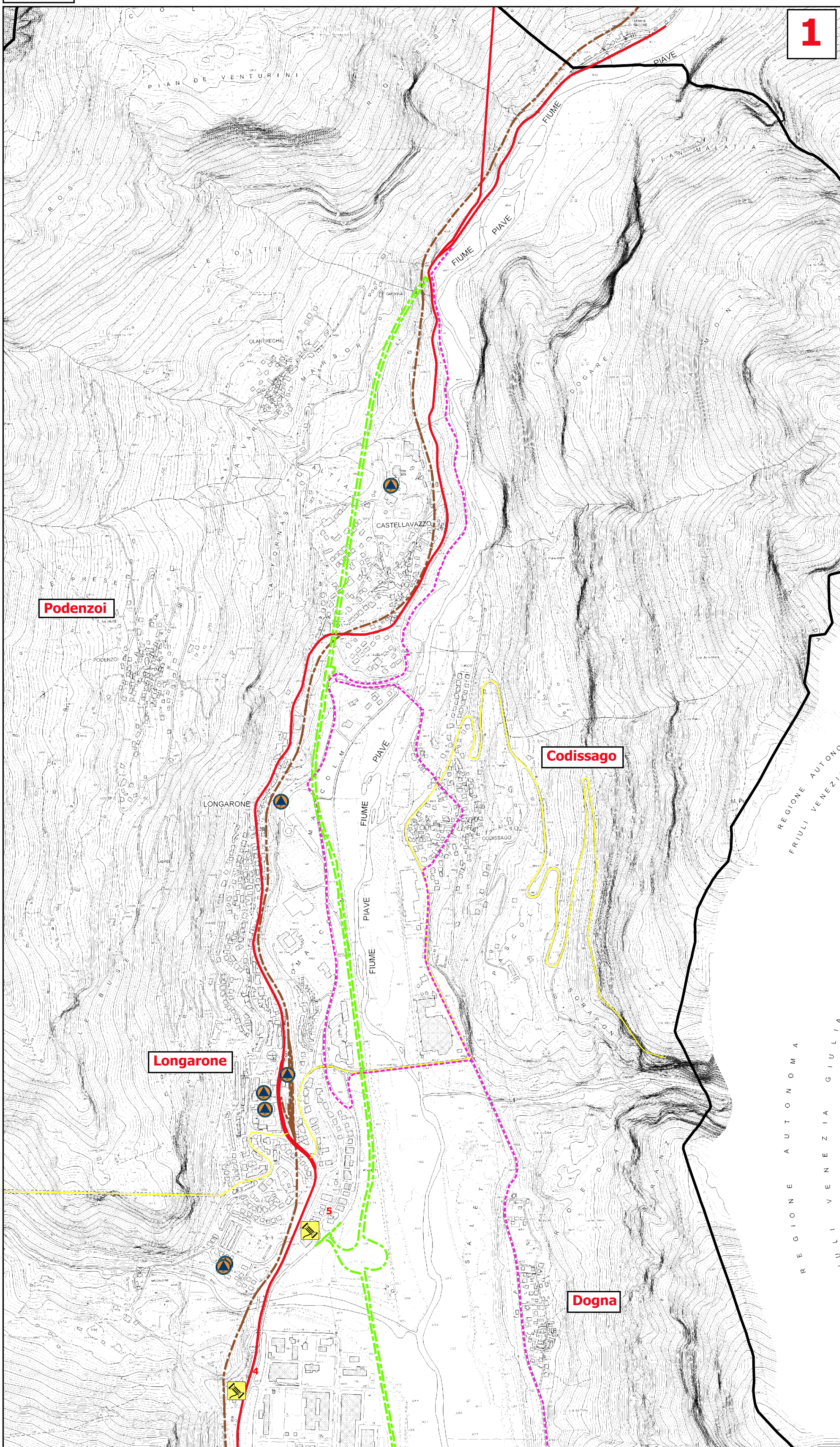
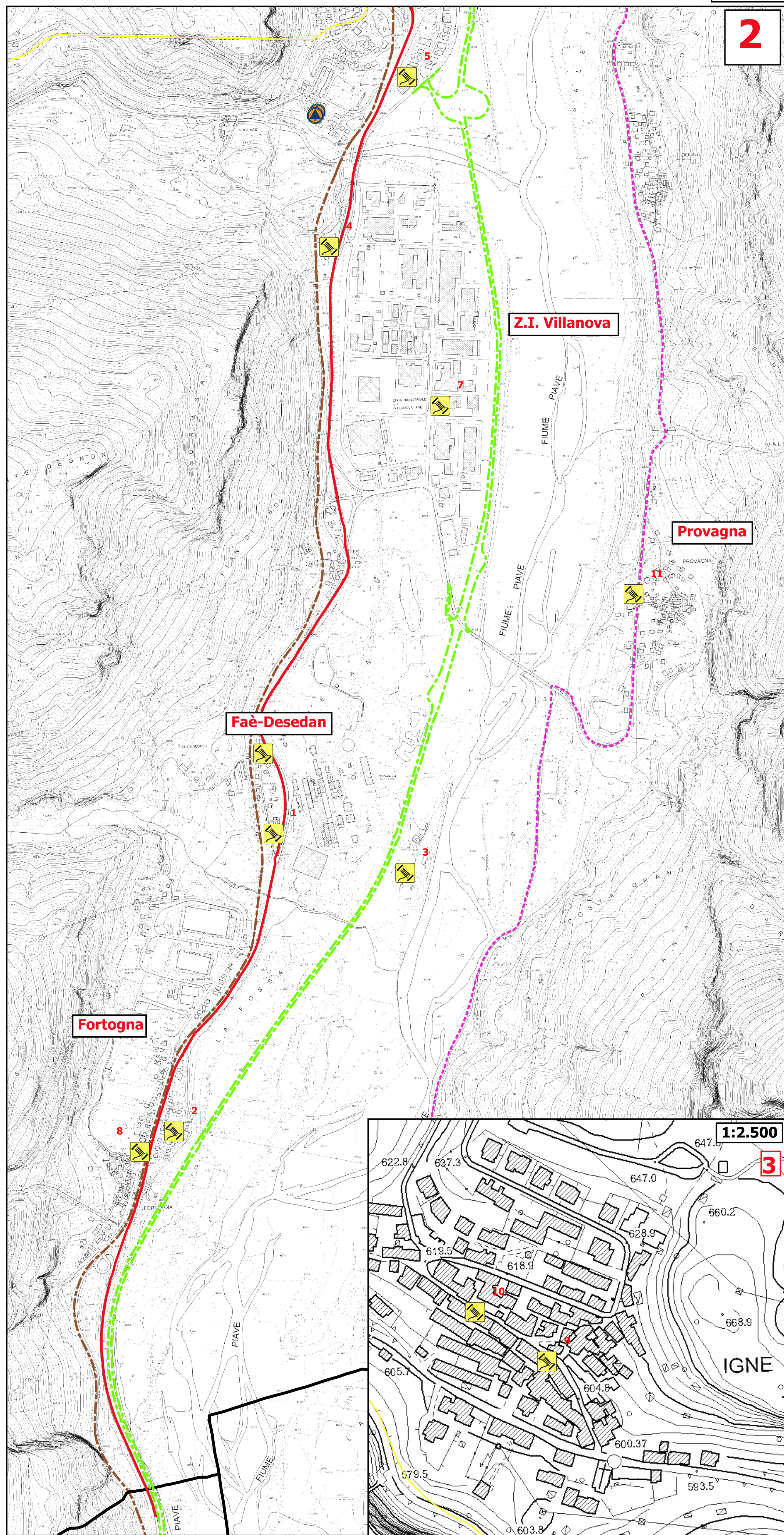


1:10.000





1:10.000


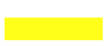





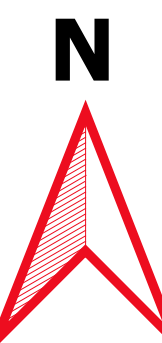
Legenda

Risorse attive

-  p0109011_OrgVolontariato [7]
-  p0109033_Materiali [11]

Rete_Stradale

-  S.S.51
-  S.P.251
-  Ciclabile Ve-Mu
-  New Variante
-  Rete_Ferroviaria



COMUNE di LONGARONE
Provincia di Belluno

**Piano Comunale di
PROTEZIONE CIVILE**

A14-Risorse Attive